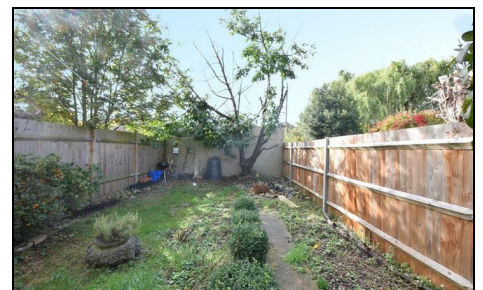
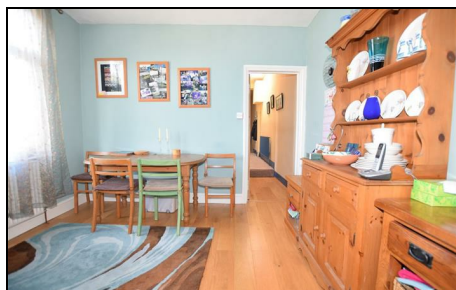
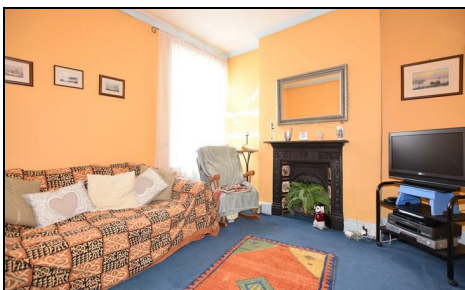


**Robinson Road  
Colliers Wood, SW17 9DR**

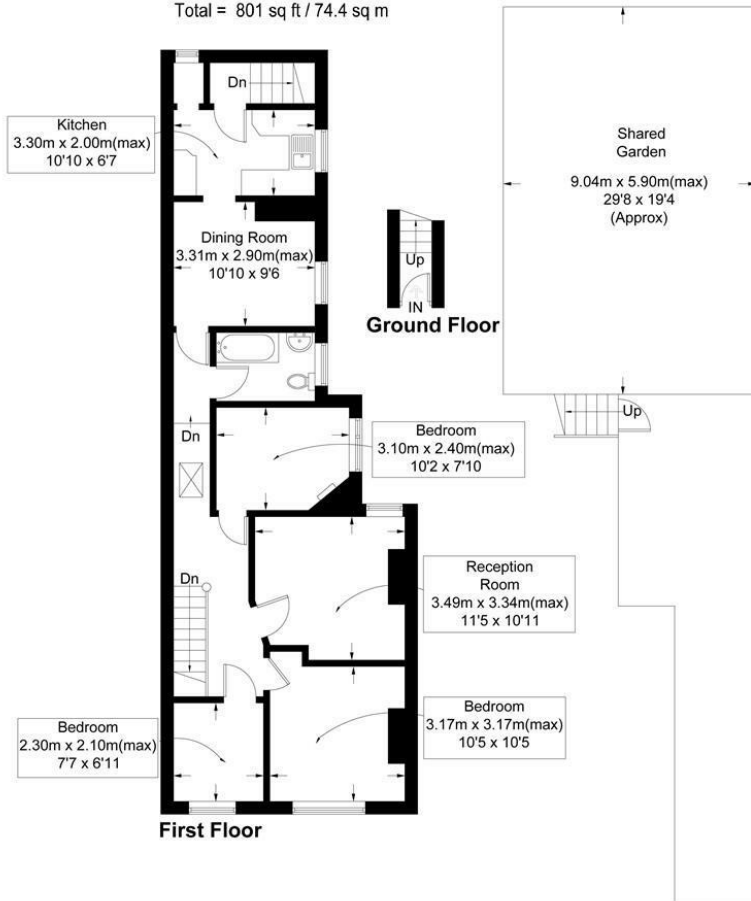
**£525,000 Leasehold - Share of Freehold**



**Three bedroom, two reception room Victorian maisonette with garden located a short walk to Colliers Wood High Street and Tube. Well presented though in need of cosmetic updating. Share of freehold. Potential to extend into loft (STPP). Larger than average, spacious property, ideal first time buyer home. Great location close to excellent transport links and good local schools**

## Robinson Road, SW19

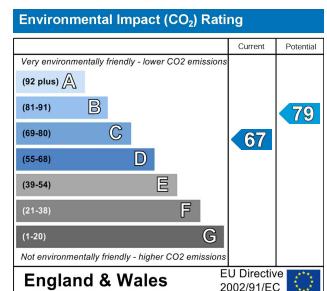
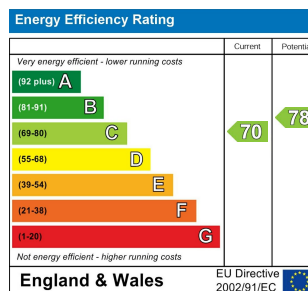
Approximate Gross Internal Area  
 Ground Floor = 16 sq ft / 1.5 sq m  
 First Floor = 785 sq ft / 72.9 sq m  
 Total = 801 sq ft / 74.4 sq m



This floor plan is for representation purposes only and is not drawn to scale. Whilst every attempt has been made to ensure the accuracy of the plan measurements of doors, windows and rooms are approximate only and should be checked before making any decisions reliant upon them.  
 Copyright Bespokeplans.co.uk 2016 (ID291307)



- Character Features
- Own Front Door
- Share of Freehold
- Loft and Refurb Potential
- Close to Transport
- EPC Rating TBC



For Free Mortgage Quote and Best Mortgage Rates, call an Ellisons Mortgage Advisor on 020 8544 0518



Although these particulars are believed to be correct, their accuracy is not guaranteed and they do not form part of any contract.

Celebrating 30 years of successful Sales and Lettings in Merton

